



# Promoting Vaccine Equity Using a Wholistic Social Needs Approach

Geetika Nadkarni, MPH<sup>1</sup>, Shalini Nair, MPH,CPH<sup>1</sup>, & Lillie Seels, NCRT<sup>2</sup>

<sup>1</sup> Association of State & Territorial Health Officials (ASTHO)

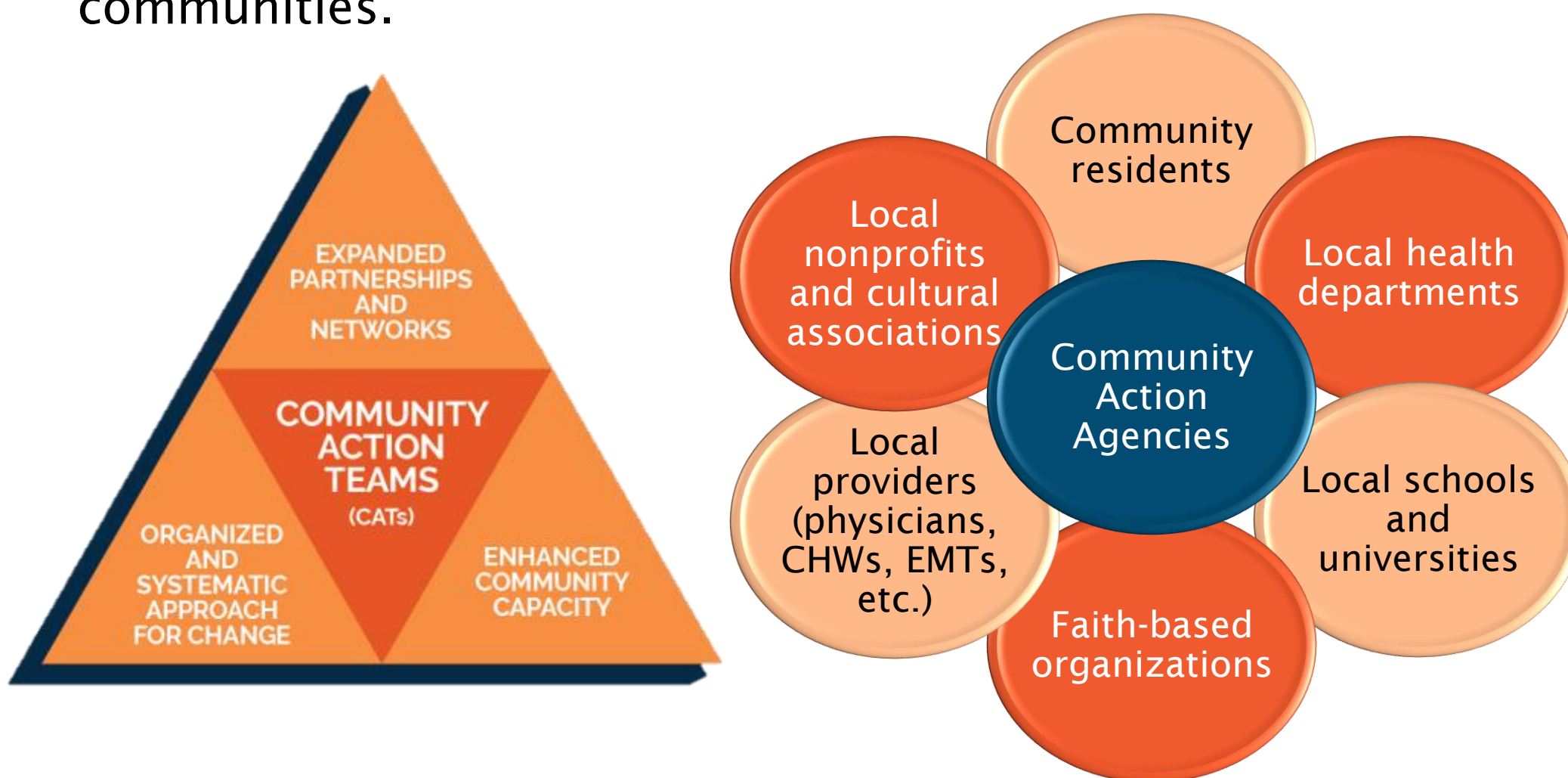
<sup>2</sup> National Community Action Partnership (NCAP)

## Introduction

- The COVID-19 pandemic disproportionately impacted racial and ethnic minority populations, people living with disabilities, people experiencing homelessness, and other vulnerable populations.
- These same communities often had limited access to the vaccine, longstanding mistrust of the government, and greater economic hardships exacerbated by the pandemic.
- Public health can work with community action agencies to address the wholistic needs of the community while increasing vaccination rates and vaccine confidence.

## Methods

- ASTHO worked with NCAP to identify 5 community action agencies (CAAs) that served counties that exhibited high rates of health inequalities and disparities in vaccination rates and socioeconomic burden. These agencies were already serving the needs of their communities through food and housing assistance, utilities assistance, HeadStart, youth leadership, and employment assistance programs.
- Each CAA organized a community action team (CAT) and community action plan based on evidence-based strategies to increase COVID-19 and influenza vaccination rates in their communities.



- CAAs used their networks of partnerships to offer vaccines and educational information along with other resources including access to other vaccinations, additional health resources and those addressing basic needs.

## What is Community Action?

Community action agencies are funded through the Community Services Block Grant to support individuals and families in achieving financial stability. **CAAs are a beneficial partner to public health due to their existing reach in the community, trusted reputation, and network of nontraditional partners.**

## Community Action Agency Partners

- Community Action Partnership of Kern (Kern County, CA)
- Community Action Partnership of Central Arkansas (White, Faulkner & Cleburne Counties, AR)
- Enrichment Services Program (Troup & Stewart Counties, GA & Russell County, AL)
- Pickens Community Action (Pickens County, AL)
- Palmetto Community Action Partnership (Berkeley County, SC)

**Pairing vaccine access and outreach with resources that address essential needs such as housing, food, utilities, employment, and childcare can help increase community-level vaccine uptake and improve vaccine confidence.**



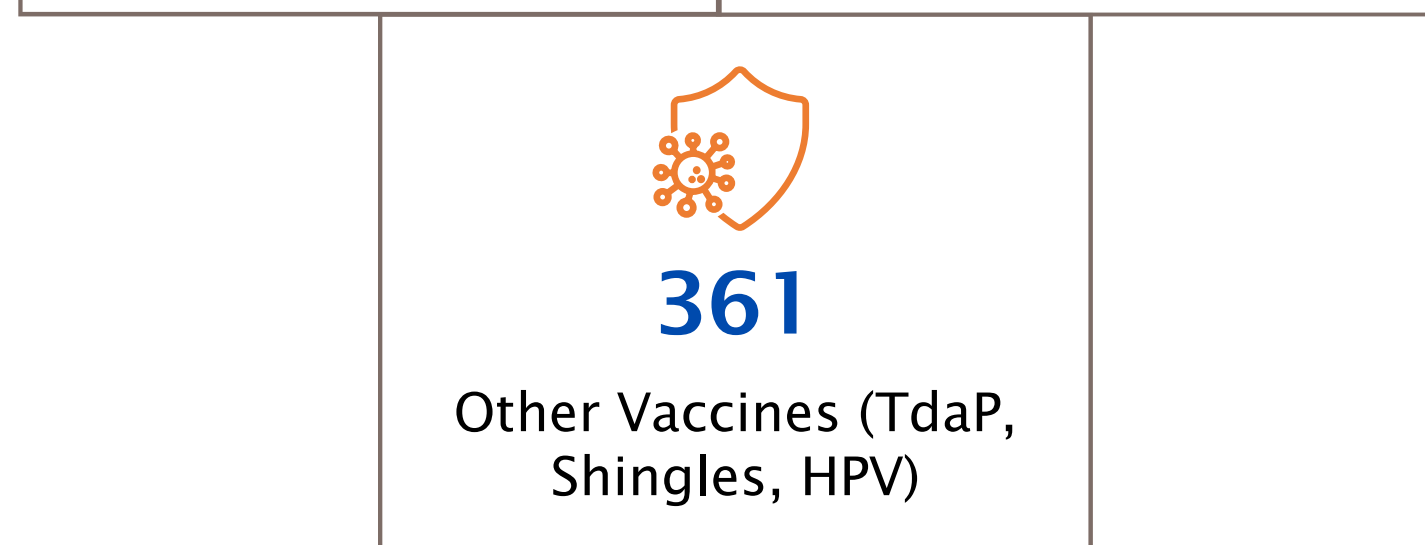
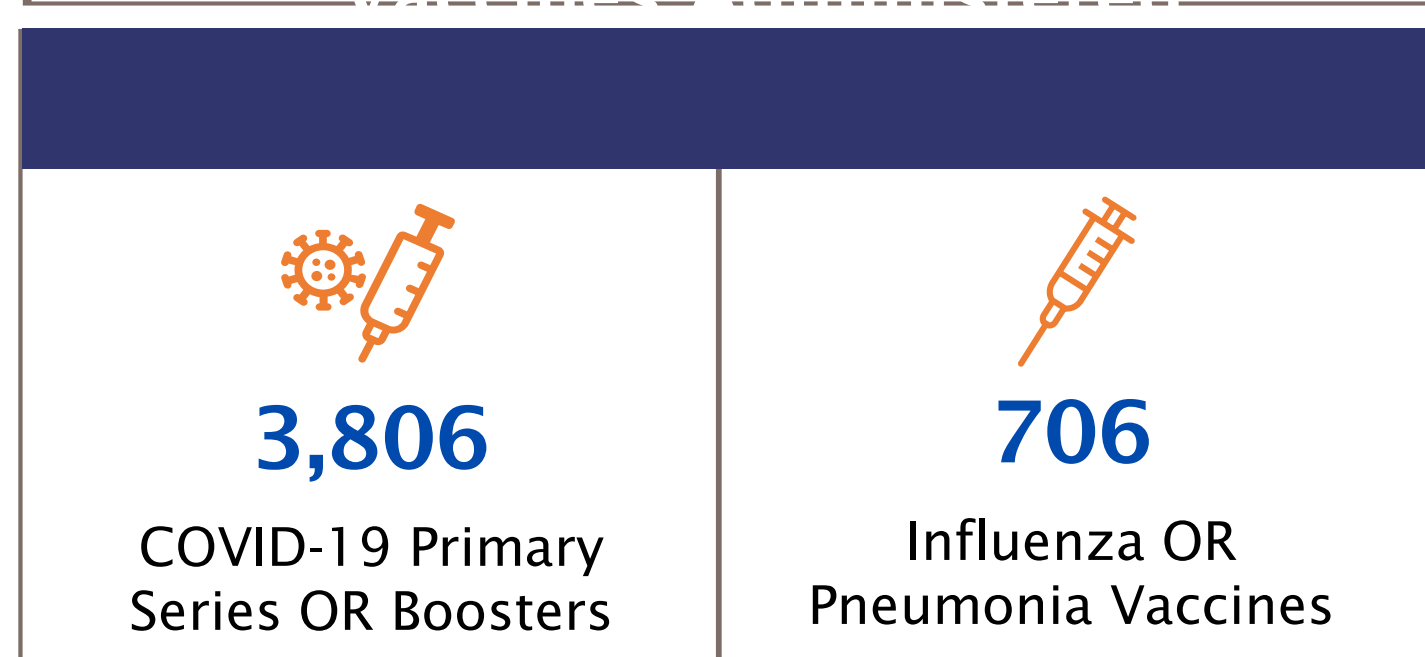
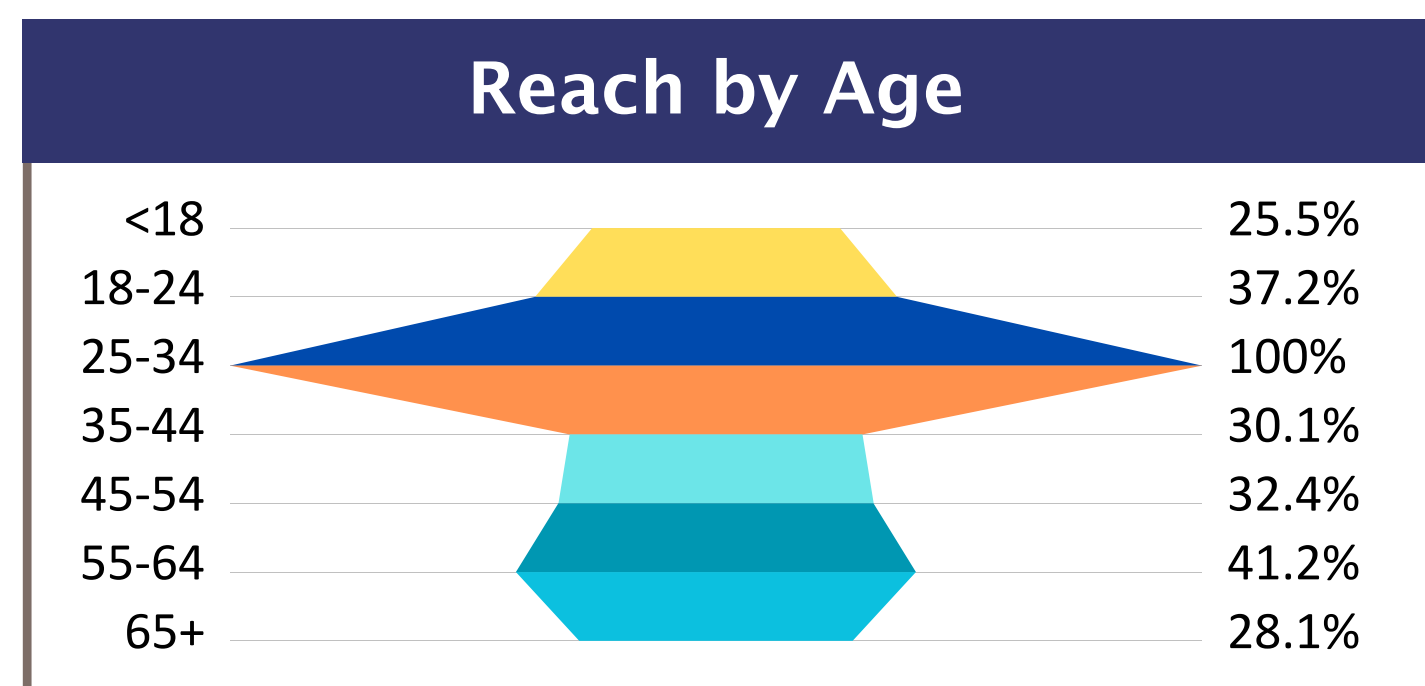
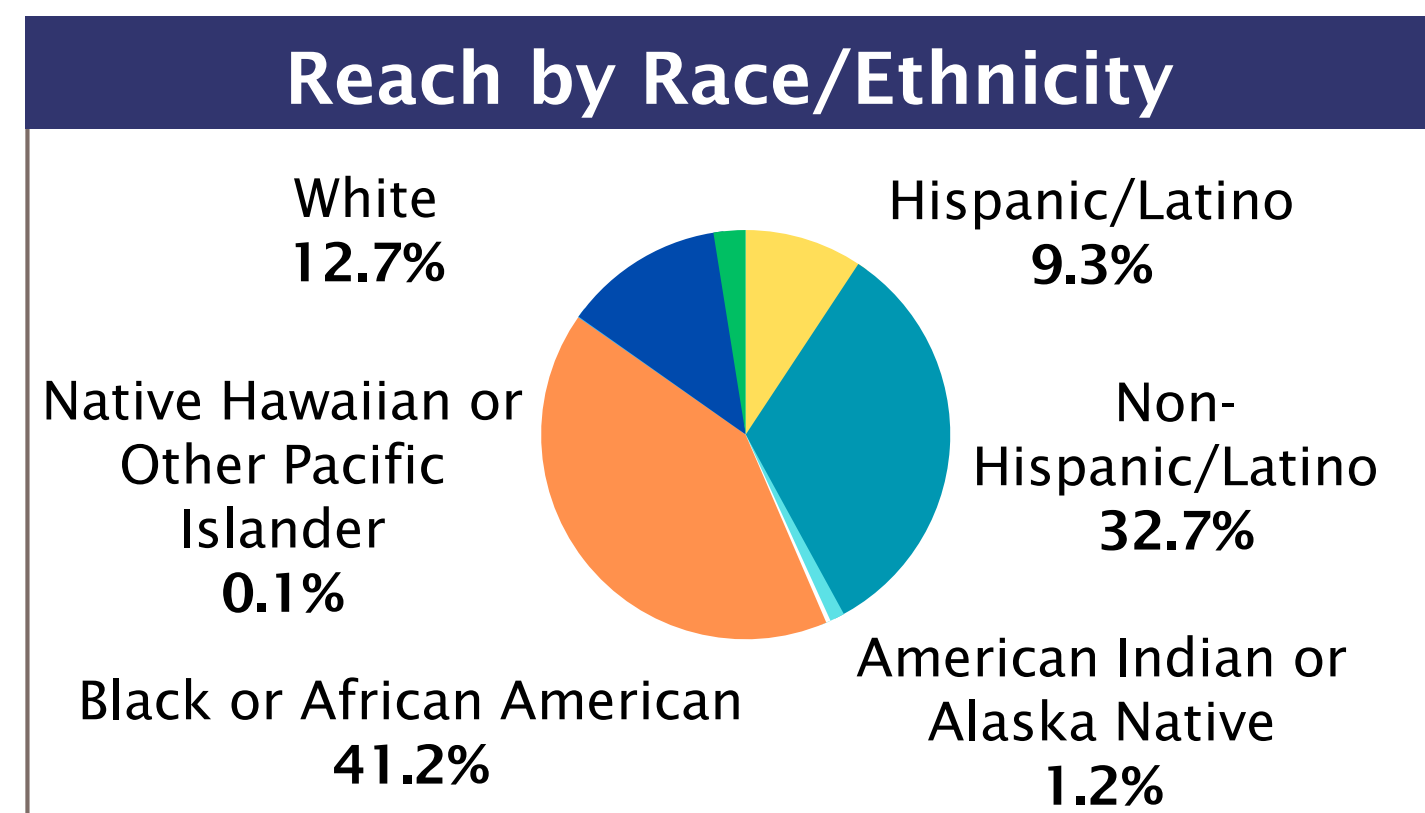
School supply giveaway and vaccine event in Russell County, AL



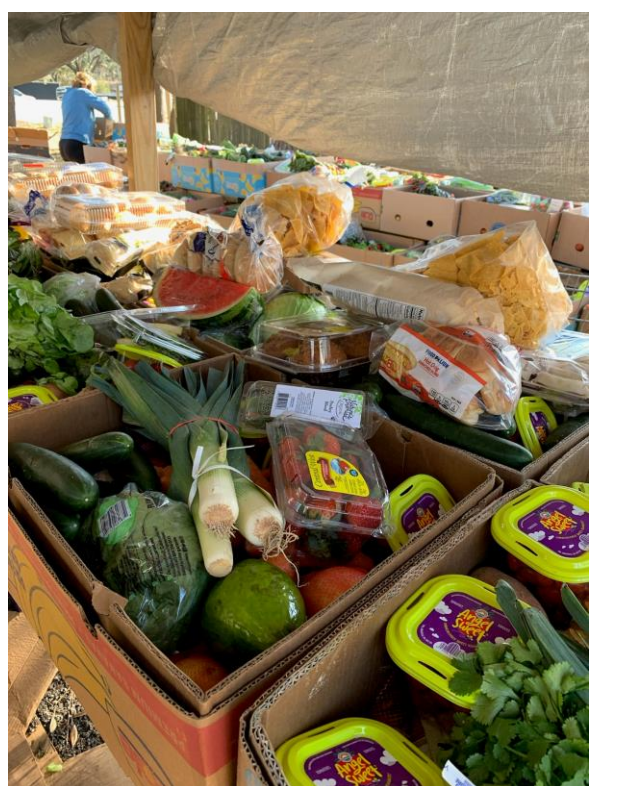
Kern County vaccine promotion flyer

## Results

As of October 2023, the CAAs have hosted **400+** events, provided information to **over 1.45 million** people and provided **4,500+** vaccinations through their public health and healthcare partners.



Enrichment Services vaccine postcard



Fresh food boxes for distribution at vaccine event



(Above) Sign for vaccine event at Berkeley Church of Christ in Monck's Corner, SC

(Below) Project Homeless Connect mobile unit - Community Action of Central Arkansas (CAPCA)



This project was funded by the CDC Partnering for Vaccine Equity Program, under Grant Number NU21IP000598. The contents of this presentation are solely the responsibility of the authors and do not necessarily represent the official views of CDC.

